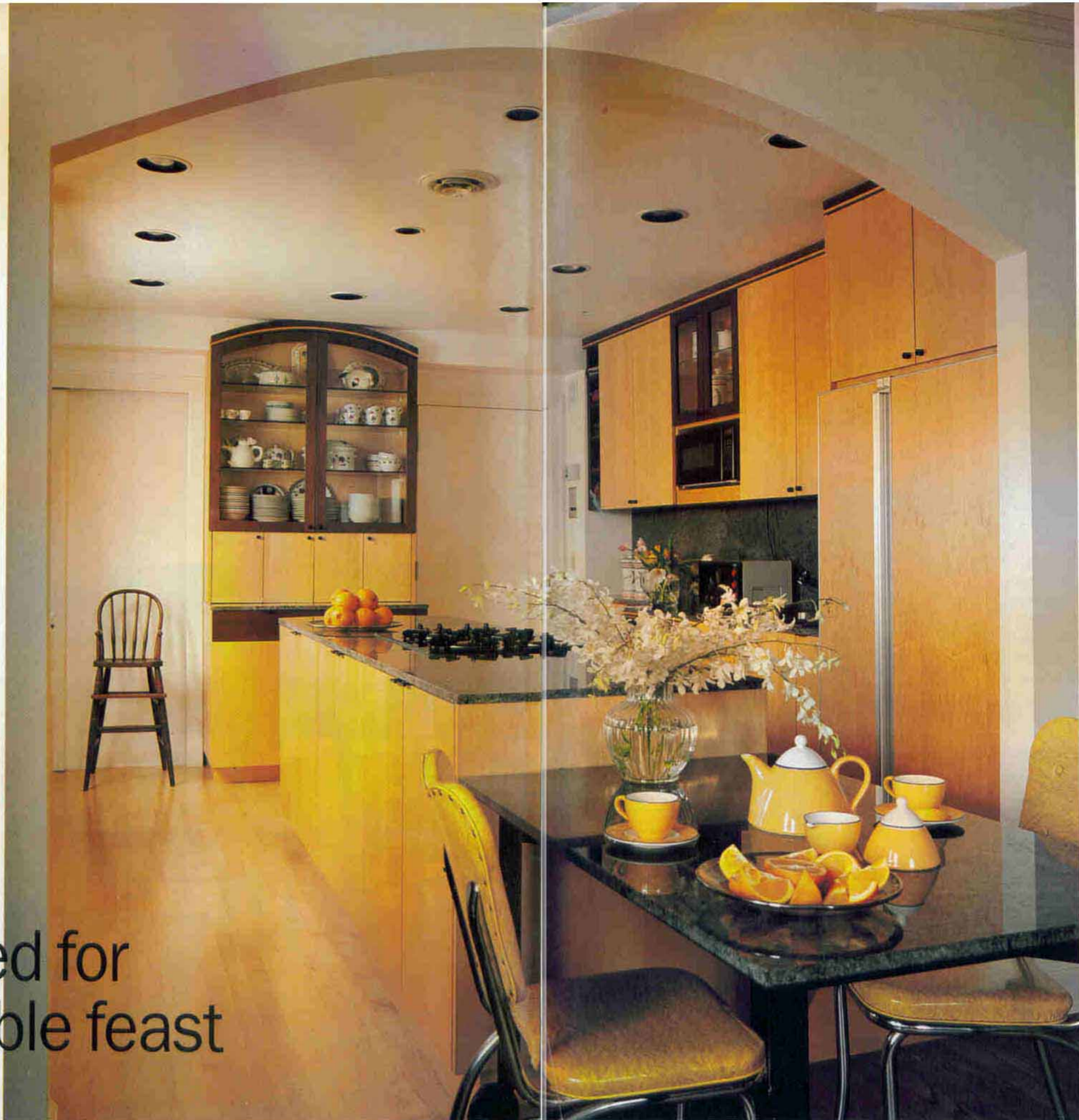


**With flexibility  
and finesse,  
a meals-on-wheels  
kitchen caters to  
the new needs  
of a young family**

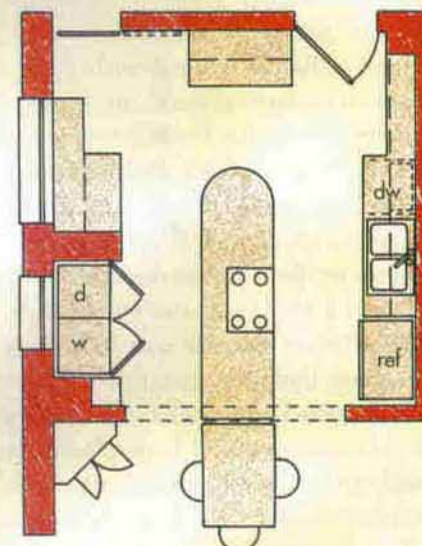
Photography: Alan Shortall

ONCE UPON A TIME, VALERIE WILEY and Tim Johnson gave gourmet, sit-down dinner parties in the dining room adjacent to the kitchen in their 1920s apartment in Chicago. But when baby made three and entertaining became a more casual family affair, the formal dining room ceased to suit the new circumstances. To set things right, the couple called in Chicago architect Claudia Skylar Mastro, who devised a clever solution: The formal dining room became a dining-family room and part-time playground. The swinging door between the two rooms was replaced with an expansive arch to tie the spaces together. For family meals, a granite table on wheels was docked next to a new island, where a cooktop and oven are concealed; for dinner with friends, it rolls into the dining-family room and joins forces with a twin. The refrigerator, faced with maple to match the new cabi-

**designed for  
a movable feast**



nets, was positioned along one of the kitchen's side walls, camouflaging it within sight of the dining area. When viewed from the dining table, the focus of the 13 x 13-foot kitchen is a new Hoosier-style cabinet at the far end of the island. "We didn't want a 'great room,'" says Wiley. "We still wanted to distinguish the kitchen from the rest of the space. This was the perfect solution."



Like a piece of fine furniture, a new Hoosier-style cabinet with a curved top displays everyday dishes and serving pieces behind glass doors and conceals small appliances behind solid bi-fold doors. Throughout, new light maple cabinets are accented with mahogany-stained cherry trim. Above the sink and below another pair of glass doors, a microwave oven rests in its own niche.

**SOURCES**

Cabinets: Custom. Cooktop: Sterling. Oven: Dacor. Refrigerator: Amana. Dishwasher: ISE. Microwave: GE. See page 111.